



Annual Report



Contact Us



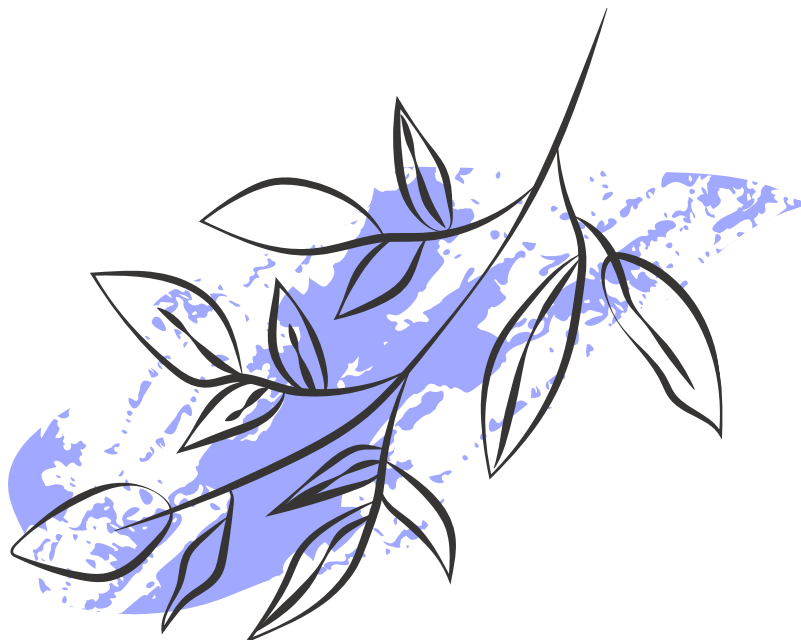
bluwestopportunities.org



828-251-2824



PO Box 1250, Asheville, NC
28802





CONTENTS

TOPIC	PAGE
Message From Management	1
Vision and Values	2
Residential Services	3
Day Services	4
Financial Report Card	5
Pics and Data	6
Satisfaction	7
Years of Service	8
In Memory	9
Administration and Board	10



29 January, 2023

thank you



Hi, Everyone!

As I thought about what to say about this past year, I initially felt a sense of uncertainty. It has been another challenging year. The impact of Covid-19 continues to provide challenges. Staffing issues have been ongoing, and frankly we are all tired!

However, as I worked on this report, I found inspiration in the meaningful work we do and in the amazing people involved in that work. I saw our *Culture of CARE* in every photograph I sorted through. I saw our purpose of providing high quality services to people with Intellectual and Developmental Disabilities (IDD) being played out in every smile. I can say sincerely and with pride that all BWO staff pulled together as always to do our work well in a tough environment.

I am pleased that we have been able to gather together in ways that had seemed impossible since the start of the pandemic. We have returned to live training sessions, had group festivals and parties, and resumed many community-based activities for the residents.

I look forward to more opportunities for additional learning in the coming year. Thank you all for continuing to support BlueWest Opportunities!

**With Sincere
Gratitude,**

Tina M. Woody, CEO

BlueWest Opportunities is a not for profit agency with the mission of providing cost-effective, high quality residential and vocational services and supports to individuals with intellectual and developmental disabilities in order to allow them to reach their greatest potential.

**IN OUR WORK, WE STRIVE
TO LIVE THE FOLLOWING
VALUES:**

C ompassionate

A ccountable

R espectful

E mpowering

***our
vision***

...is a world in
which people with
disabilities are
accepted as
valued,
contributing
members of their
own communities.

Residential Services

687,660

Total Hours of Residential Services

26,280 hours

Residential Supports

RESIDENTIAL SUPPORTS An Innovations Service designed to assist individuals in improving or maintaining skills, provide supervision, increase self-sufficiency, and ensure full membership in the community.

661,380 hours

ICF/IID Services

ICF/IID's provide all-inclusive residential and habilitation services to people with intellectual disabilities or a related condition with a focus on active treatment.

Community
Living at it's
Finest





Day Services

8052

Total Hours of Day Services

1585 hours

Community Networking

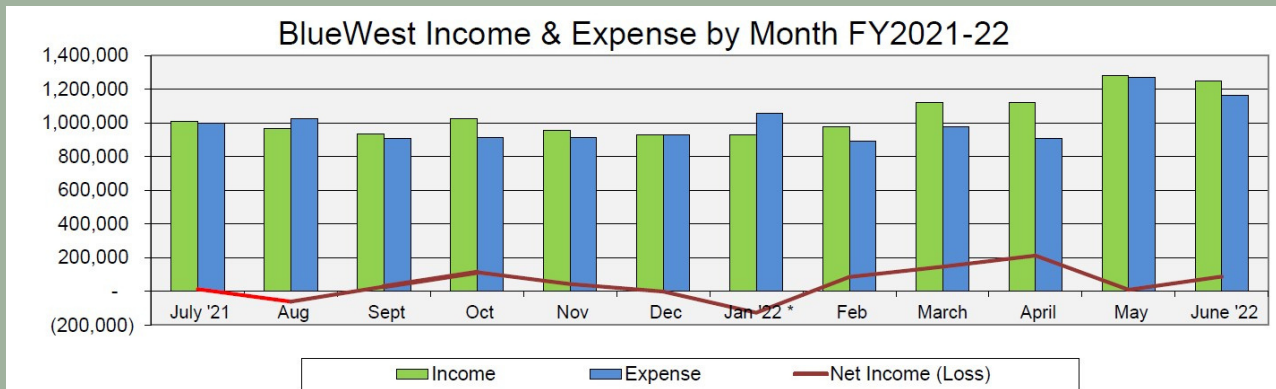
COMMUNITY NETWORKING - An Innovations Service that supports an individual's meaningful day within the community in an integrated manner.

6467 hours

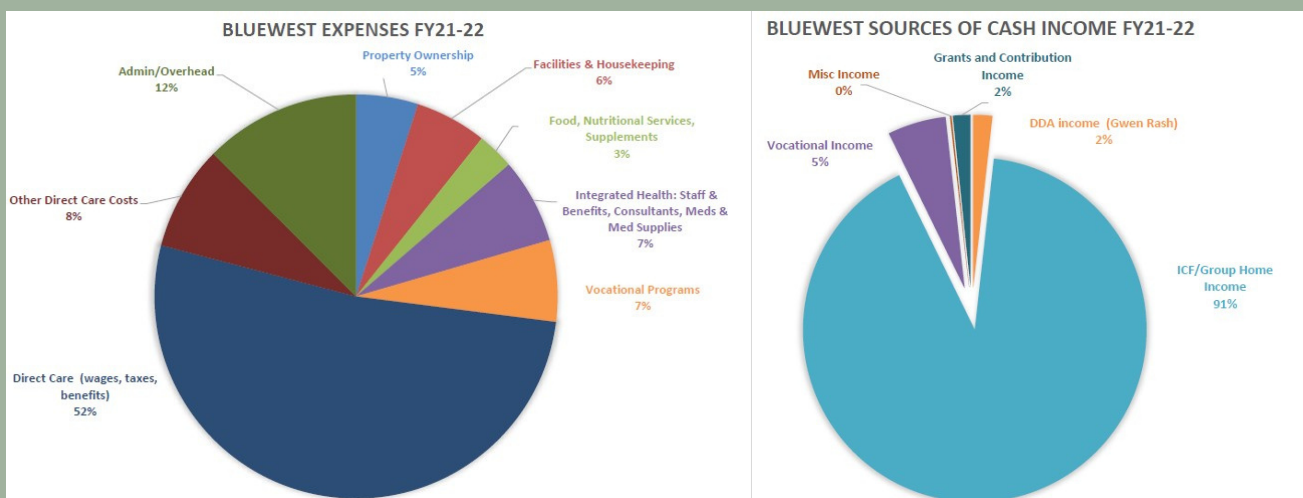
Day Supports

Day Supports - An Innovations Service that supports an individual or group to increase or maintain self-help, socialization and adaptive skills.

FINANCIAL REPORT CARD



Enhanced Rates due to COVID-19 Pandemic continued through November 2022.
For our most recent *Financial Audit*, contact Miriam Stuart.



Debt Ratio - YTD				
Measures ability to pay off long term notes and debts				
STRONG			0.22	
Troubled	Warning		Strong	
1 +	1	0.5	0.5 or less	

Current Ratio - YTD				
Measures ability to fund operations next 90 days				
STRONG			6.62	
Troubled	Warning		Strong	
0	1	1.5	1.5 +	



250,000+
Direct Support Hours
provided in 2022



Your
paragraph
h text



57%
of people supported
have co-occurring
mental health needs



99.5%
of residents had all
recommended
preventative health
screenings



THAT'S WHAT THEY SAID

Really
exceptional
people work here!

Very grateful to have a
place and staff that I
am comfortable with
for my brother.

99.5% 

OF GUARDIANS SURVEYED
ARE
SATISFIED WITH SERVICES

My (family
member) feels
happy and valued.

I have and will continue
to recommend the
services at MOC to
other families





2022 YEARS OF SERVICE MILESTONES

1 Year

Tammy Chandler
Kiimberly Caulder
Shaniqua Foster
Shelley Smith
Sharon Allen
Maria Hurtado
Mark Jones
Julie Maxwell
Stephen Nycum
Kearsten Pendley
Stephanie Perry
Eileen Conley
Camie Fiber
Jessica Martin
Marquetta Ware
Benjamin Greene
Carmen Greene

5 Years

Megan Mathis
Johanna Boyd
Kia Green
Krystin Ingle
Donna Shope
Johnathan Singh
Melanie Moore

10 Years

Sandra Fox
Leann Bryson
Jessica Parham
Julie Harding
Jason Metcalf

15-20 Years

Nicole Compton
Roxanna Trejo
Yolanda McClain
Lucinda Winspear
Heidi Riddle
Tracy Hollifield
Elmer Riddle
Linda Riddle
Patricia Barber

21-30 Years

Abigail Sprinkle
Olivia Cowan
Lisa Duncan
Carolyn Pack
Paula Nibarger
Diane Kemp
Victoria Pressley
Scott Briggs
Joy Moore

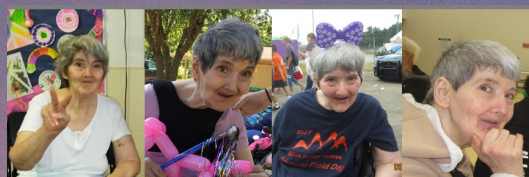
>30 Years

Shirley Hensley
Wilma Hensley
Anita Smith
Stephanie Handy
Rhonda Cantrell
Tina Woody



In Memory of...

Jamie 9/27/1960—5/04/2022



Debra 11/02/1955 — 10/05/2022



Doris 07/19/1955 -
12/15/2022



Shawn 9/05/1964 — 10/06/2022

Board of Directors

Bruce Murray - Chairperson

Wanda Curley - Treasurer

Diane VanNuys - Secretary

Alania Nelson

Linda McDaniel

Wendy Craig

Administration and Management

Tina Woody - Chief Executive Officer

Miriam Stuart - Chief Financial Officer

Tammy Chandler - Chief Human Resources Officer

Vicky Pressley - CEO Assistant/ Quality Assurance

Scott Briggs - Director of Facility Services

Roxanna Trejo - Director of Integrated Health

Jennifer Edge - Residential Site Director (Mars Hill)

Melanie Huff - Residential Site Director (West)

Jessica Parham- Residential Site Director (Swannanoa)





**PO Box 1250
Asheville, NC 28801**

**828-251-2824
www.bluestopportunities.org**